



7 Yarrow Court REDBANK PLAINS QLD

3  2  2 

The property is on just over a quarter acre block with side access and is located in a quiet cul-de-sac location.

View : <https://www.livingpm.com.au/8055558>

Located in the heart of Redbank Plains, the property is situated close to local parks, schools, public transport, and shopping.

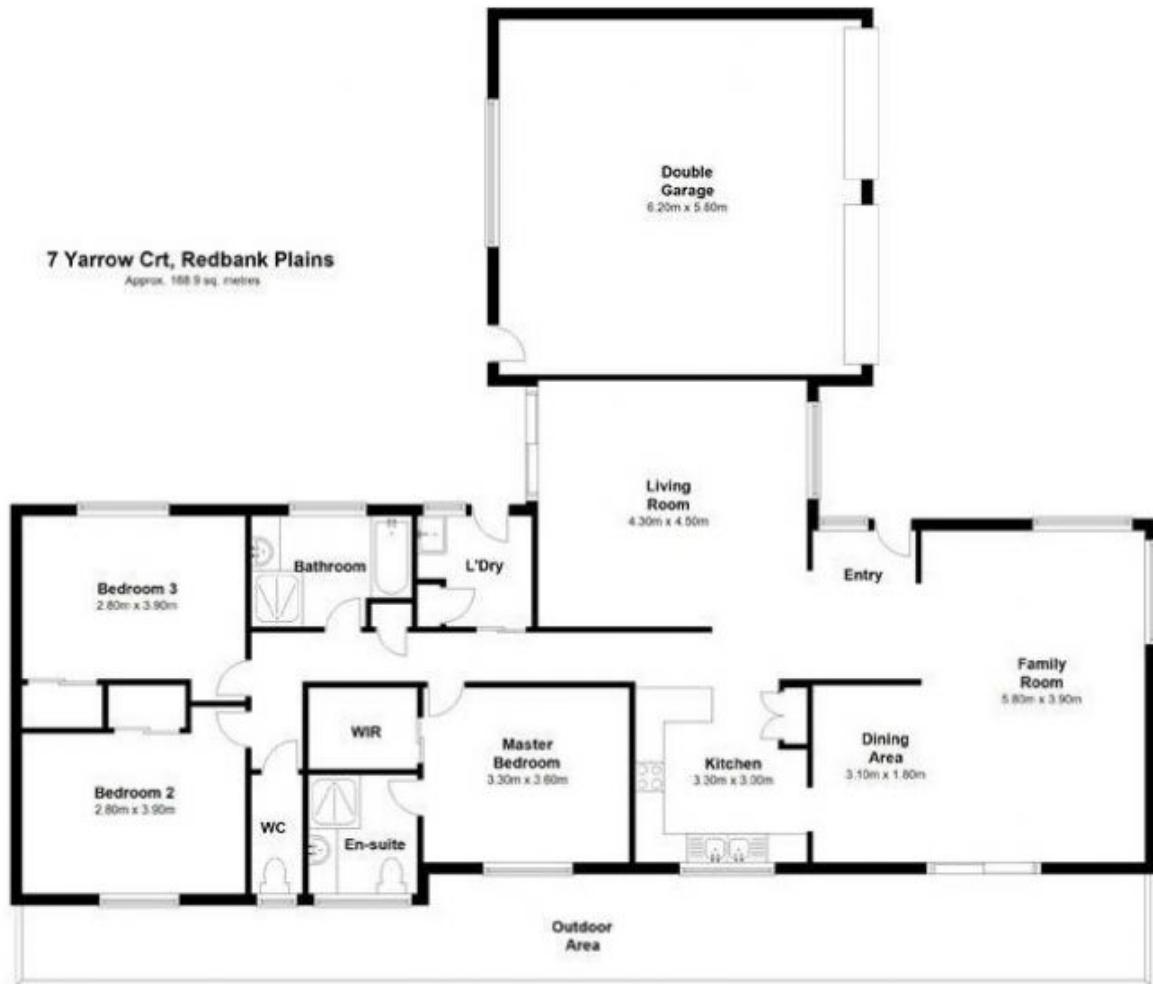
Features include:

- 3 Spacious bedrooms
- Master with ensuite and walk-in-robe
- Large sunken lounge room
- Separate dining room
- Great sized kitchen with ample bench top and cupboard space
- Separate internal laundry
- Double lock-up garage
- Large covered entertaining area



Keely Watt
0417 595 944

7 Yarrow Crt, Redbank Plains
Approx. 168.9 sq. metres



Total area: approx. 168.9 sq. metres

Whilst every attempt has been made to ensure accuracy of this floor plan, the measurements are approximate only and no responsibility is taken for measurement error.
Plan produced using PlanUp.